



N	NO <sub>2</sub>
B	Benzene
S	SO <sub>2</sub>
PM	PM <sub>10</sub> /PM <sub>2.5</sub>

#### Project

Ringaskiddy Resource  
Recovery Centre  
Assessment

#### Reference

14\_7880AR01

#### Figure 8.1a

Diffusion Tube and  
PM<sub>10</sub>/PM<sub>2.5</sub> Monitoring  
Locations (Ringaskiddy)

This graphic is for  
diagrammatic purposes  
only. No measurement  
to be taken.



The Tecpro Building, Clonshaugh Business and Technology Park, Dublin 17  
T: +353 1 847 4220 F: +353 1 847 4257

ARUP



Diffusion Tube and PM<sub>10</sub>/PM<sub>2.5</sub> Monitoring Locations (Ringaskiddy)

Ringaskiddy Resource Recovery Centre

238129-00

January 2016

Figure 8.1a



N	NO <sub>2</sub>
B	Benzene
S	SO <sub>2</sub>

#### Project

Ringaskiddy Resource  
Recovery Centre  
Assessment

#### Reference

14\_7880AR01

#### Figure 8.1b

Diffusion Tube  
Monitoring Locations  
(Monkstown and Cobh)

This graphic is for  
diagrammatic purposes  
only. No measurement  
to be taken.



The Tecpro Building, Clonshaugh Business and Technology Park, Dublin 17  
T: +353 1 847 4220 F: +353 1 847 4257

ARUP



Diffusion Tube Monitoring Locations (Monkstown and Cobh)

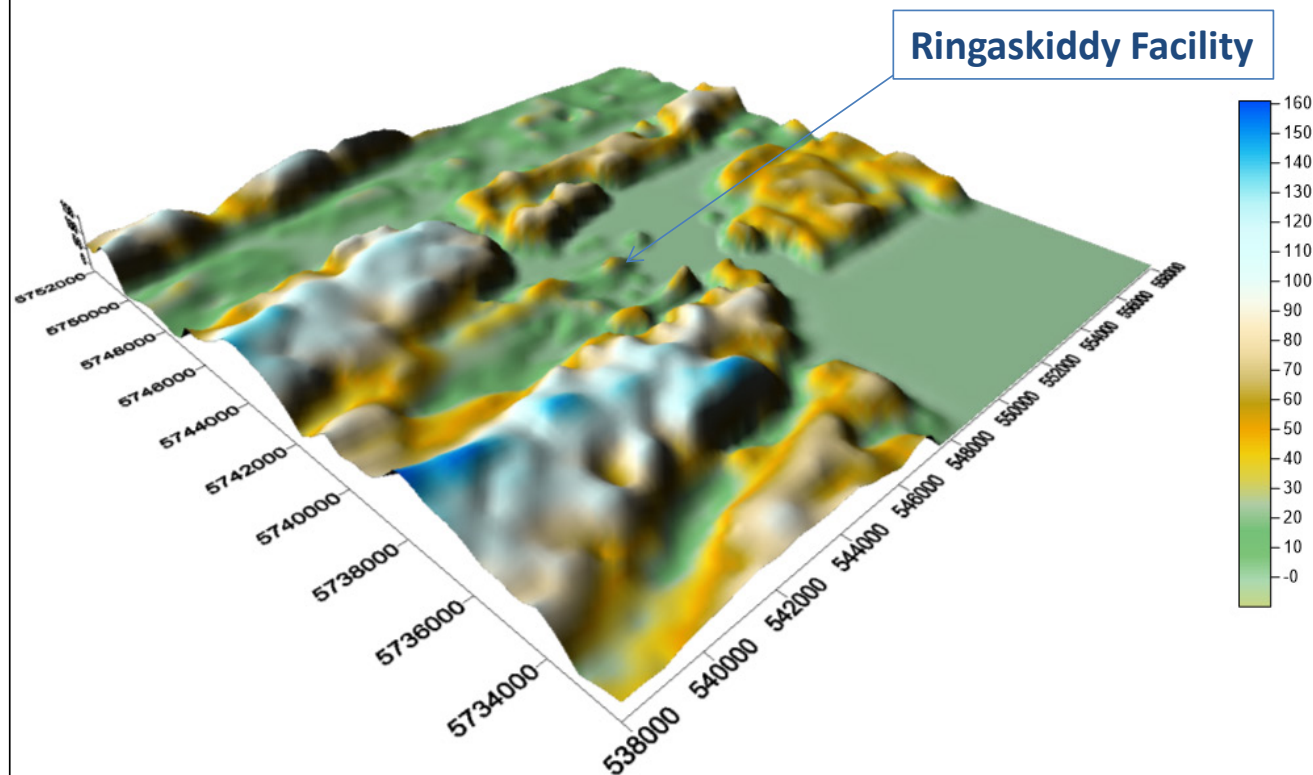
Ringaskiddy Resource Recovery Centre

238129-00

January 2016

Figure 8.1b





**Project**  
Ringaskiddy Resource  
Recovery Centre  
Assessment

**Reference**  
14/7880AR01

**Figure 8.2**  
Terrain In The Vicinity Of  
Ringaskiddy Resource  
Recovery Centre,  
Ringaskiddy, County  
Cork (UTM Coordinates)

**This graphic is for  
diagrammatic purposes  
only. No measurement  
to be taken.**



The Tecpro Building, Clonshaugh Business and Technology Park, Dublin 17  
T: +353 1 847 4220 F: +353 1 847 4257

ARUP



SRTM Terrain for AERMAP Model

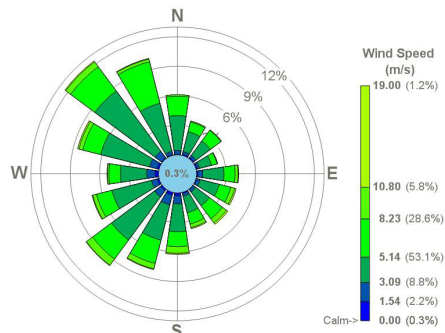
Ringaskiddy Resource Recovery Centre

238129-00

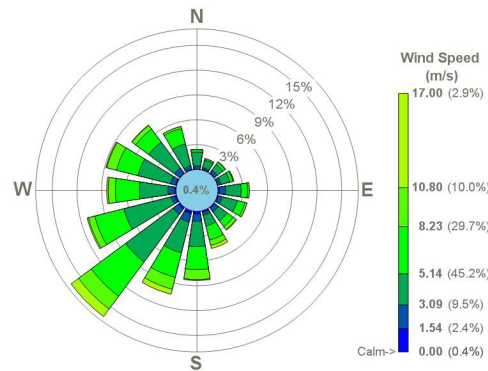
January 2016

Figure 8.2

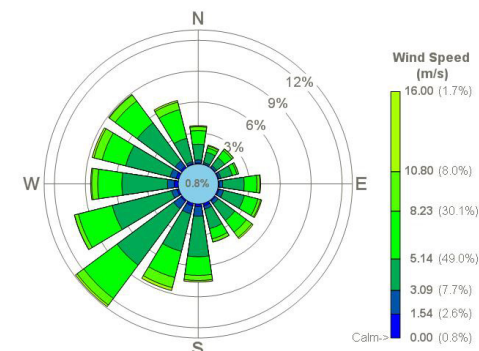
Cork Airport 2010



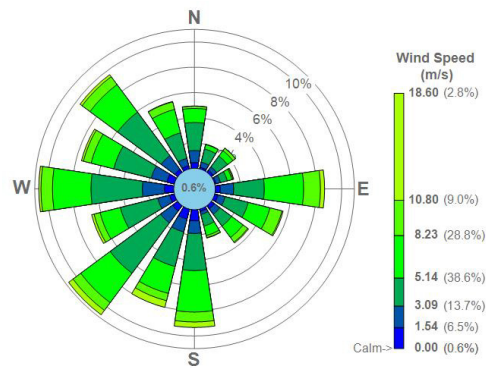
Cork Airport 2011



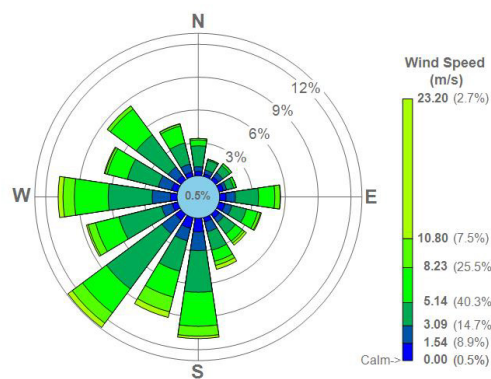
Cork Airport 2012



Cork Airport 2013



Cork Airport 2014



**Project**  
Ringaskiddy Resource  
Recovery Centre  
Assessment

**Reference**

14/7880AR01

**Figure 8.3**

Cork Airport

Windrose

2010 - 2014

This graphic is for  
diagrammatic purposes  
only. No measurement  
to be taken.

awnconsulting

The Tecpro Building, Clonsillaugh Business and Technology Park, Dublin 17  
T: +353 1 847 4220 F: +353 1 847 4257

ARUP

INDAVER

awnconsulting

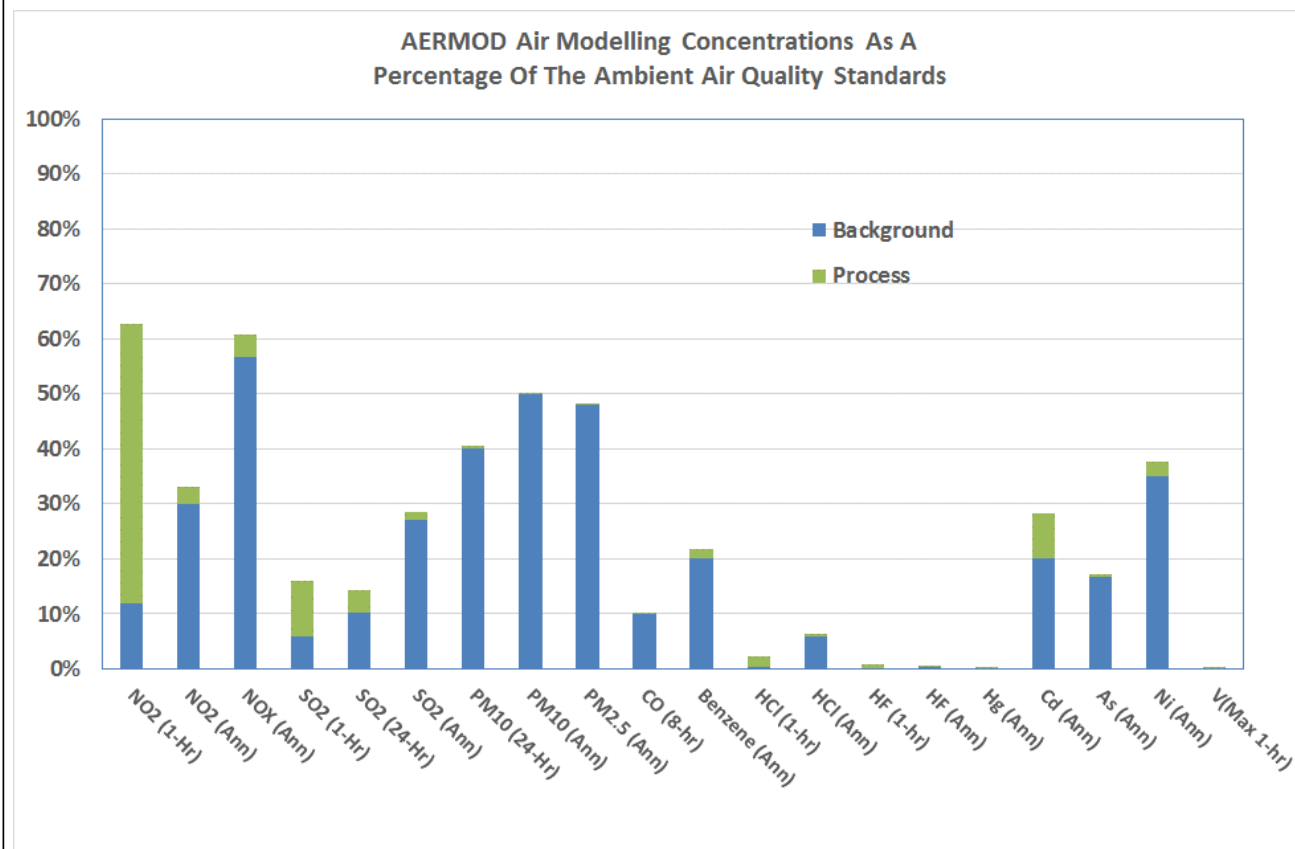
Cork Airport Windrose 2008-2012

Ringaskiddy Resource Recovery Centre

238129-00

January 2016

Figure 8.3



**Project**  
Ringaskiddy Resource  
Recovery Centre  
Assessment

**Reference**  
14/7880AR01

**Figure 8.4**  
AERMOD Modelling  
Results (as a % of  
Ambient Limit Values)  
For The Ringaskiddy  
Resource Recovery  
Centre, County Cork

**This graphic is for  
diagrammatic purposes  
only. No measurement  
to be taken.**



The Tecpro Building, Clonshaugh Business and Technology Park, Dublin 17  
T: +353 1 847 4220 F: +353 1 847 4257

ARUP



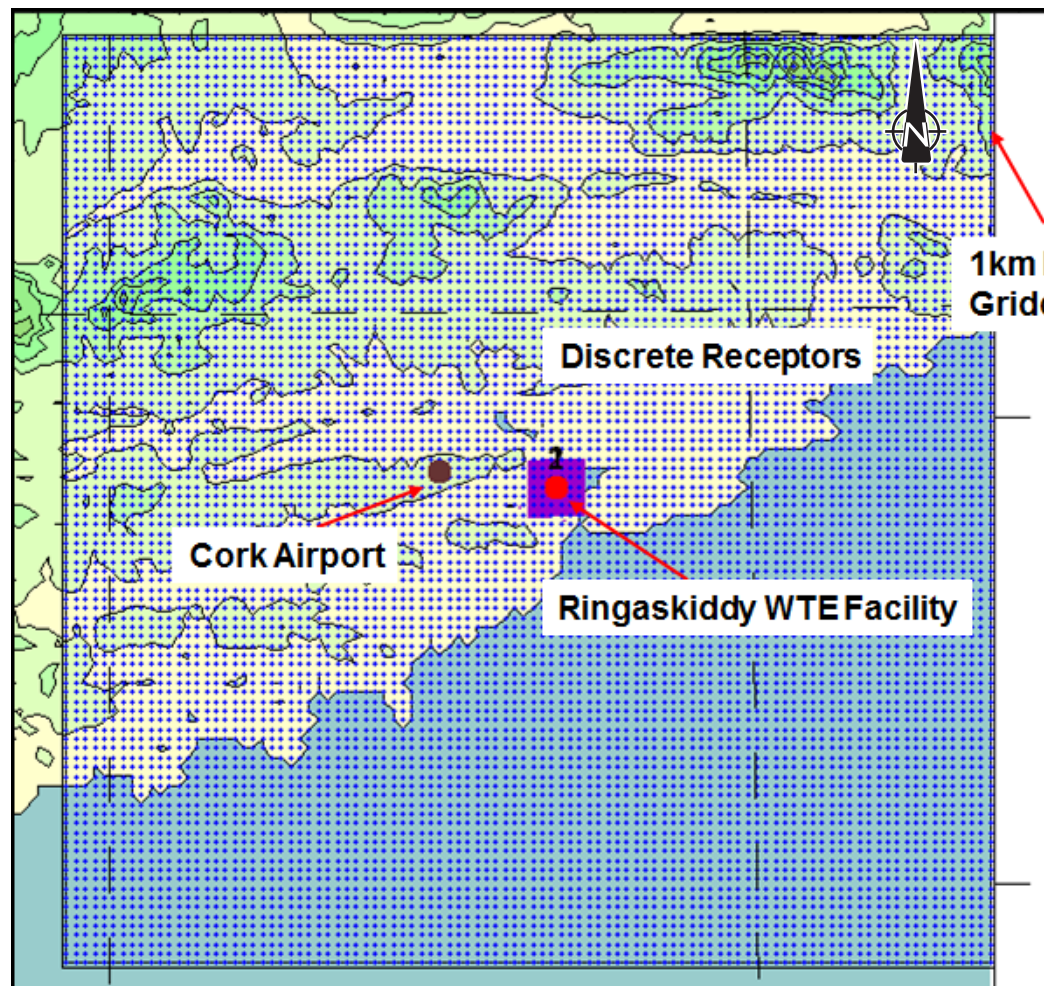
AERMOD Modelling Results (as a % of Ambient Limit Values)

Ringaskiddy Resource Recovery Centre

238129-00

January 2016

Figure 8.4



1km Resolution  
Gridded Receptors

Discrete Receptors

Cork Airport

Ringaskiddy WTE Facility



The Tecpro Building, Clonsilla Business and Technology Park, Dublin 17  
T: +353 1 847 4220 F: +353 1 847 4257

**Project**  
Ringaskiddy Resource  
Recovery Centre  
Assessment

**Reference**  
14/7880AR01

**Figure 8.5**  
CALPUFF Modelling  
Grid For The  
Ringaskiddy Resource  
Recovery Centre,  
Ringaskiddy, County  
Cork

This graphic is for  
diagrammatic purposes  
only. No measurement  
to be taken.

ARUP



CALPUFF Modelling Grid

Ringaskiddy Resource Recovery Centre

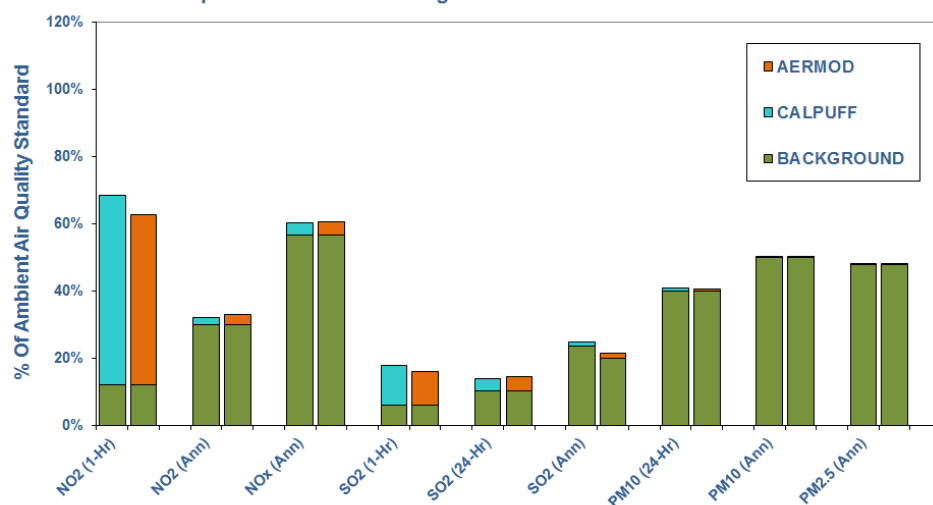
238129-00

January 2016

Figure 8.5



Comparison Of Air Modelling Results Between CALPUFF & AERMOD



**Project**  
Ringaskiddy Resource  
Recovery Centre  
Assessment

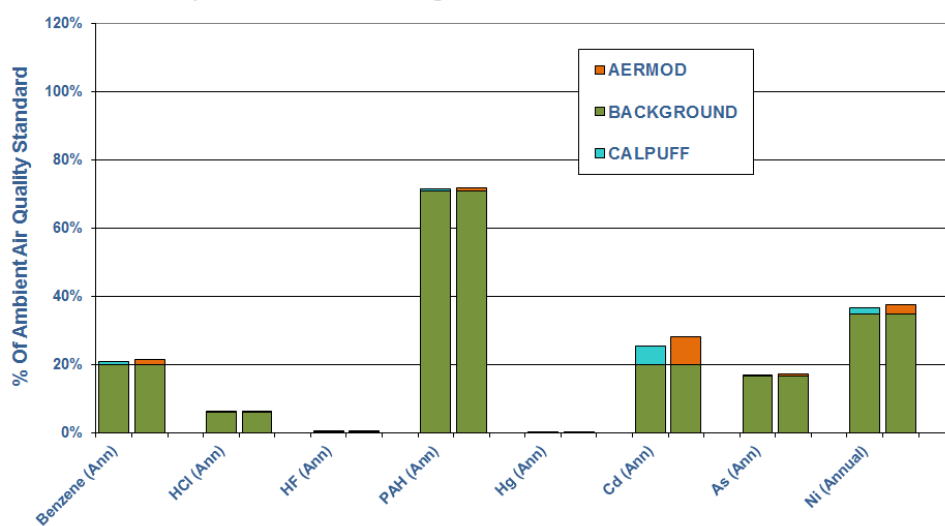
**Reference**  
14/7880AR01

**Figure 8.6**  
Comparison Between  
AERMOD & CALPUFF  
Modelling Results (as a %  
of Ambient Limit Values)  
For The Ringaskiddy  
Resource Recovery  
Centre, County Cork



The Tecpro Building, Clonsaugh Business and Technology Park, Dublin 17  
T: +353 1 847 4220 F: +353 1 847 4257

Comparison Of Air Modelling Results Between CALPUFF & AERMOD



**Project**  
Ringaskiddy Resource  
Recovery Centre  
Assessment

**Reference**  
14/7880AR01

**Figure 8.7**  
Comparison Between  
AERMOD & CALPUFF  
Modelling Results (as a %  
of Ambient Limit Values)  
For The Ringaskiddy  
Resource Recovery  
Centre, County Cork

**This graphic  
is for  
diagrammatic  
purposes  
only. No  
measurement  
to be taken.**



The Tecpro Building, Clonsaugh Business and Technology Park, Dublin 17  
T: +353 1 847 4220 F: +353 1 847 4257

ARUP



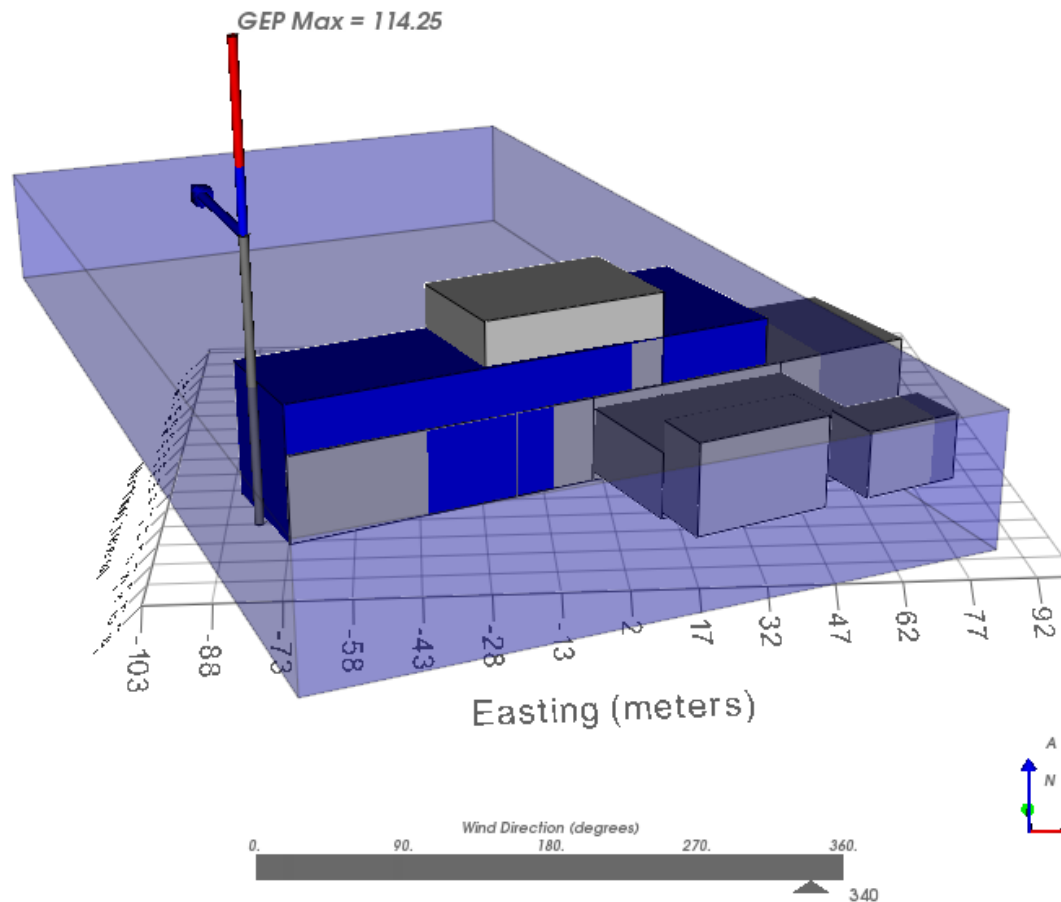
Comparison Between AERMOD & CALPUFF Modelling  
Results

Ringaskiddy Resource Recovery Centre

238129-00

January 2016

Figure 8.6 & 8.7



**Project**  
Ringaskiddy Resource  
Recovery Centre  
Assessment

**Reference**  
14/7880AR01

**Figure 8.8**  
Example Of Building  
Downwash At The  
Ringaskiddy Resource  
Recovery Centre,  
Ringaskiddy, County  
Cork

This graphic is for  
diagrammatic purposes  
only. No measurement  
to be taken.

awnconsulting

The Tecpro Building, Clonshaugh Business and Technology Park, Dublin 17  
T: +353 1 847 4220 F: +353 1 847 4257

ARUP

INDAVER

awnconsulting

Example Of Building Downwash

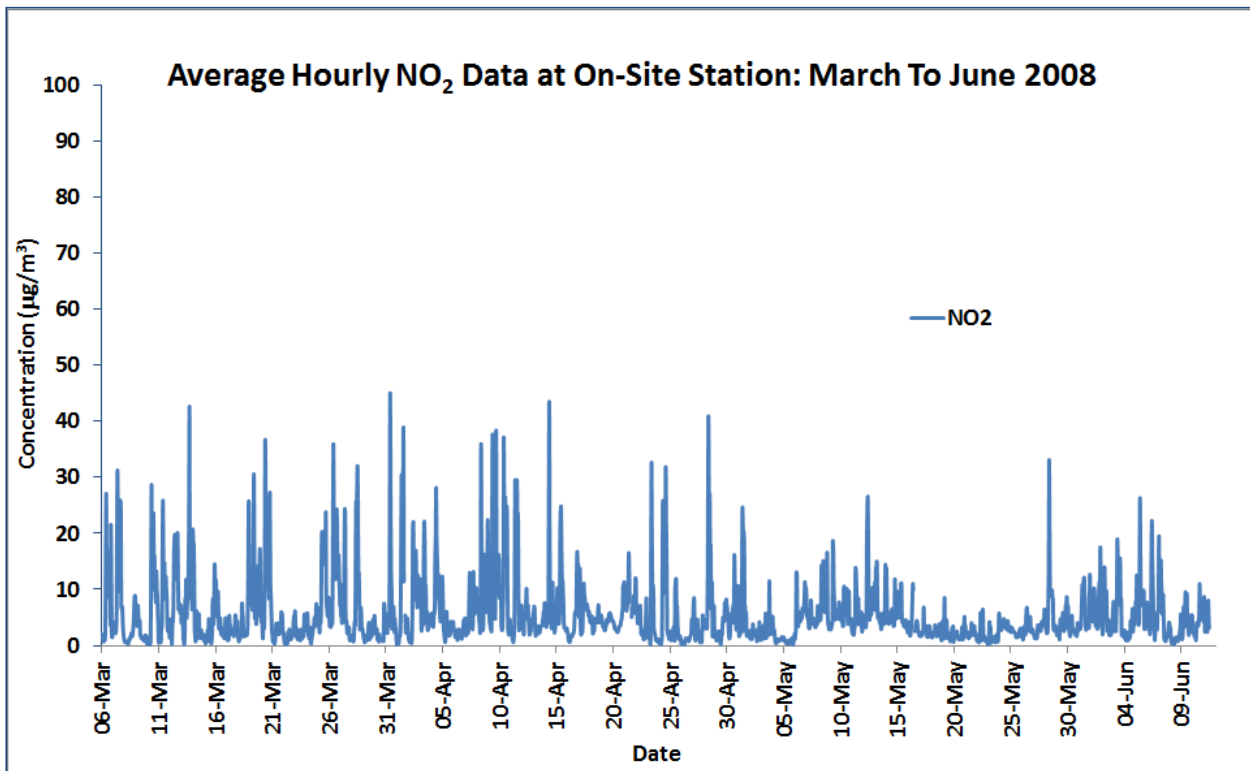
Ringaskiddy Resource Recovery Centre

238129-00

January 2016

Figure 8.8





**Project**  
Ringaskiddy Resource  
Recovery Centre  
Assessment

**Reference**  
14/7880AR01

**Figure 8.9**  
Average Hourly NO<sub>2</sub>  
Concentration (µg/m<sup>3</sup>)  
March – June 2008 At  
The Ringaskiddy  
Resource Recovery  
Centre, Ringaskiddy,  
County Cork

**This graphic is for  
diagrammatic purposes  
only. No measurement  
to be taken.**



The Tecpro Building, Clonshaugh Business and Technology Park, Dublin 17  
T: +353 1 847 4220 F: +353 1 847 4257

ARUP



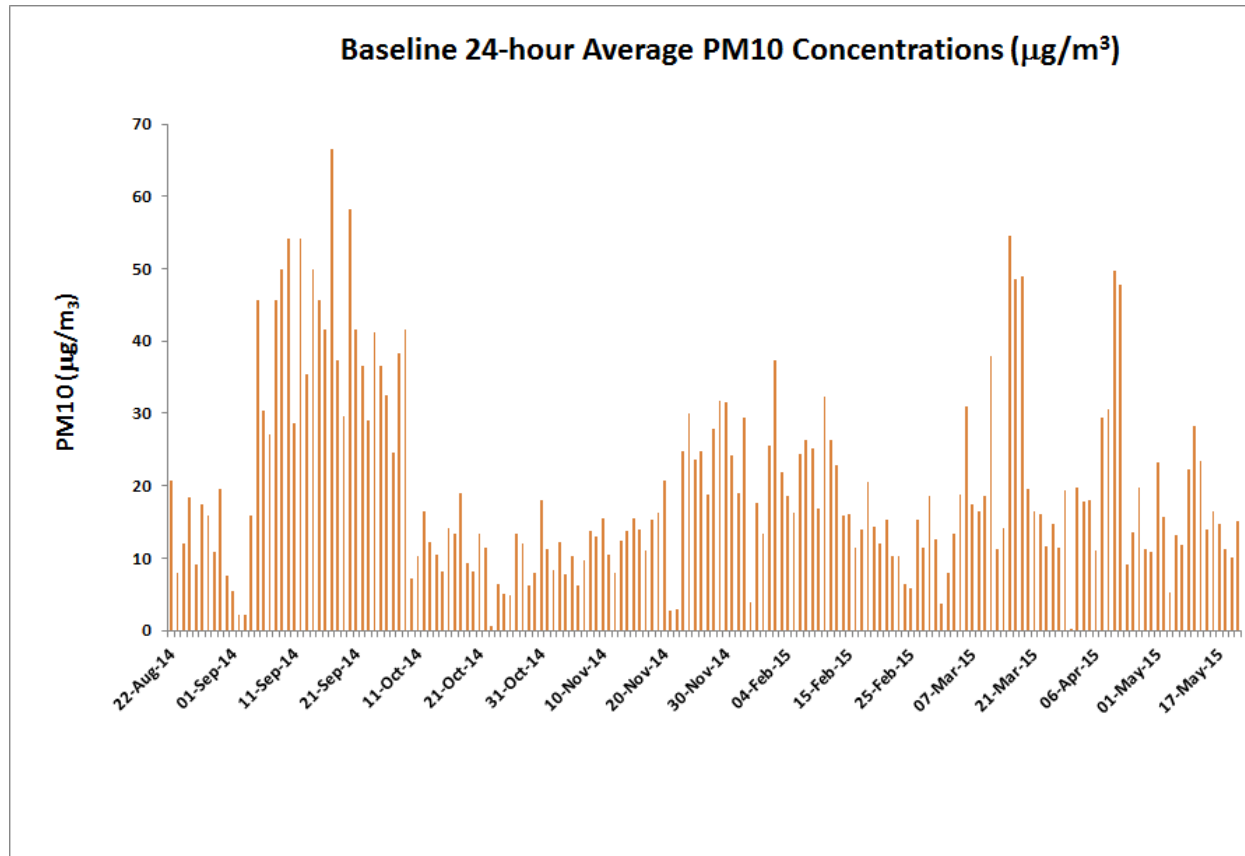
Average Hourly NO<sub>2</sub> Concentration (mg/m<sup>3</sup>) March – June 2008

Ringaskiddy Resource Recovery Centre

238129-00

January 2016

Figure 8.9



**Project**  
Ringaskiddy Resource  
Recovery Centre  
Assessment

**Reference**  
14/7880AR01

**Figure 8.10**

Average 24-Hourly PM<sub>10</sub>  
Concentration ( $\mu\text{g}/\text{m}^3$ )  
August 2014 – May 2015  
At The Ringaskiddy  
Resource Recovery  
Centre, Ringaskiddy,  
County Cork

**This graphic is for  
diagrammatic purposes  
only. No measurement  
to be taken.**



The Tecpro Building, Clonsilla Business and Technology Park, Dublin 17  
T: +353 1 847 4220 F: +353 1 847 4257

ARUP



Average 24-Hourly PM10 Concentration ( $\text{mg}/\text{m}^3$ ) August 2014 – May 2015

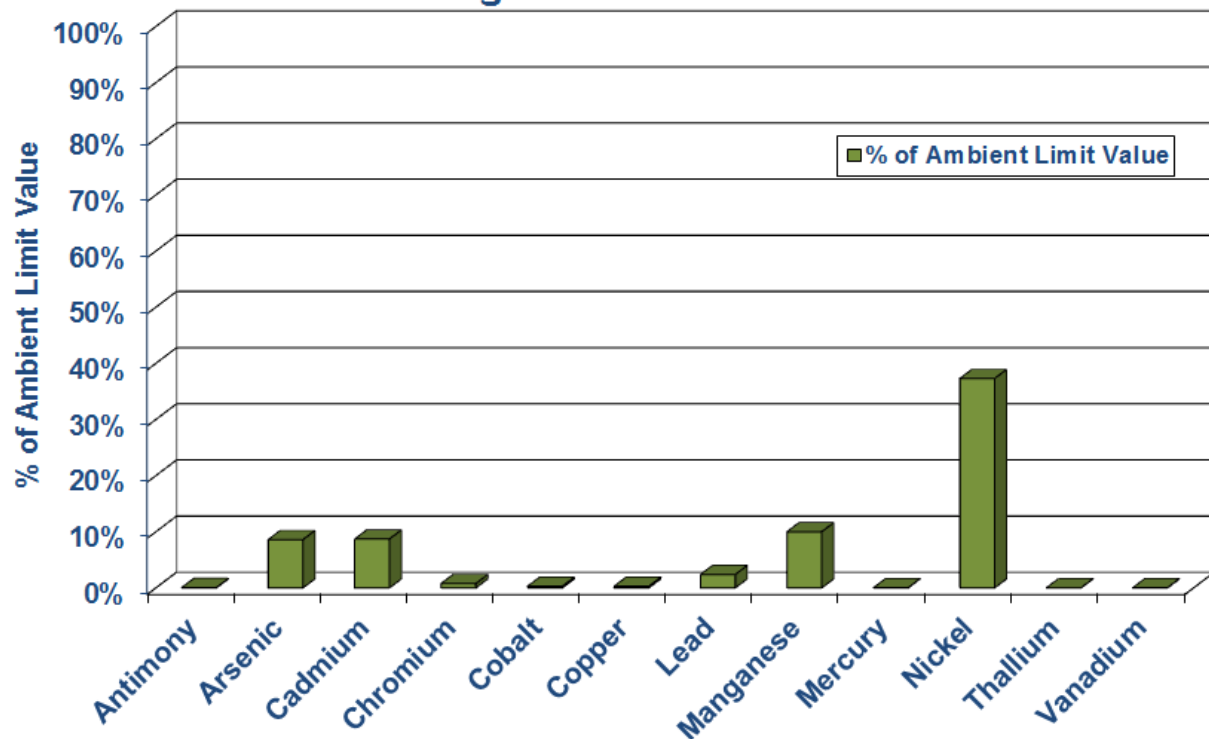
Ringaskiddy Resource Recovery Centre

238129-00

January 2016

Figure 8.10

## Baseline Heavy Metal Concentrations As A Percentage Of The Ambient Limit Values



**Project**  
Ringaskiddy Resource  
Recovery Centre  
Assessment

**Reference**

14/7880AR01

**Figure 8.11**

Baseline Ambient Heavy  
Metal Results (as a % of  
Ambient Limit Values)  
August 2014 – May 2015  
At The Ringaskiddy  
Resource Recovery  
Centre, County Cork

This graphic is for  
diagrammatic purposes  
only. No measurement  
to be taken.



The Tecpro Building, Clonsilla Business and Technology Park, Dublin 17  
T: +353 1 847 4220 F: +353 1 847 4257

ARUP



Baseline Ambient Heavy Metal Results (as a % of Ambient Limit  
Values) August 2014 – May 2015

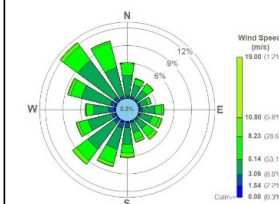
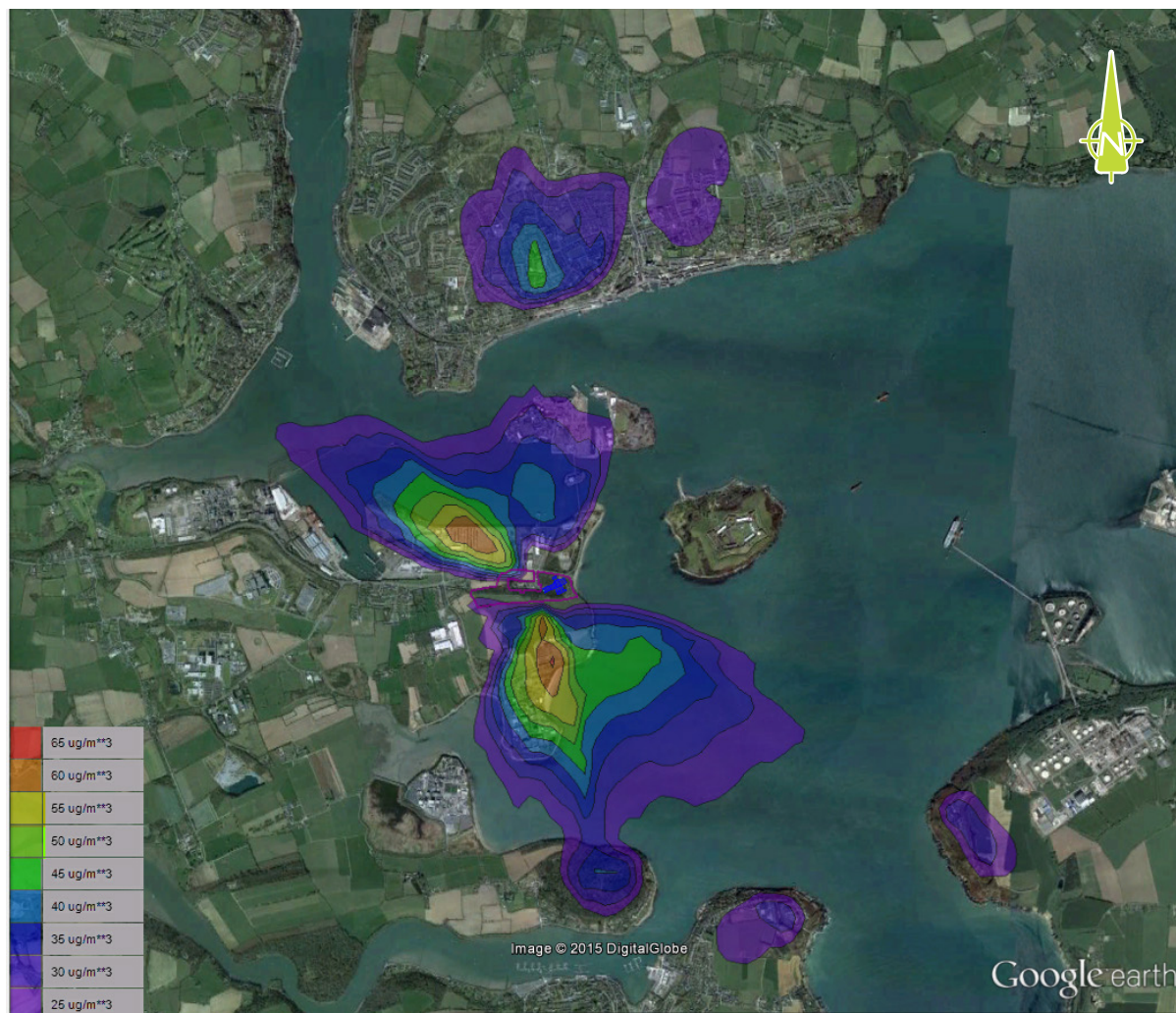
Ringaskiddy Resource Recovery Centre

238129-00

January 2016

Figure 8.11





Background Mapping from Google Earth

99.8<sup>th</sup>ile of 1-Hour Mean NO<sub>x</sub> Concentrations (excluding background) Maximum Concentration = 72.1 µg/m<sup>3</sup>

Boundary Of Facility

Scale  
1:45,000



Project  
Ringaskiddy Resource Recovery Centre Assessment

Reference  
14/7880AR01

Figure 8.12  
99.8<sup>th</sup>ile of 1-Hour NO<sub>x</sub> Concentrations (µg/m<sup>3</sup>) (Year 2010)

This graphic is for diagrammatic purposes only. No measurement to be taken.

awnconsulting

The Tecpro Building, Clonsillaugh Business and Technology Park, Dublin 17  
T: +353 1 847 4220 F: +353 1 847 4257

ARUP

INDAVER

awnconsulting

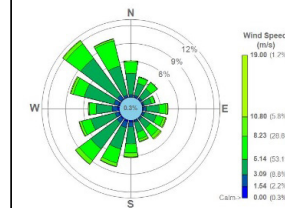
99.8<sup>th</sup>ile of 1-Hour NO<sub>x</sub> Concentrations (µg/m<sup>3</sup>) (Year 2010)

Ringaskiddy Resource Recovery Centre

238129-00

January 2016

Figure 8.12



Background Mapping from  
Google Earth

Annual Mean  $\text{NO}_x$   
Concentrations (excluding  
background)  
Maximum Concentration  
=  $1.7 \mu\text{g}/\text{m}^3$

 Boundary Of Facility

Scale  
1:35,000



**Project**  
Ringaskiddy Resource  
Recovery Centre  
Assessment

**Reference**  
14/7880AR01

**Figure 8.13**  
Annual Mean  $\text{NO}_x$   
Concentrations ( $\mu\text{g}/\text{m}^3$ )  
(Year 2010)

This graphic is for  
diagrammatic purposes  
only. No measurement  
to be taken.

  
awnconsulting

The Tecpro Building, Clonsilla Business and Technology Park, Dublin 17  
T: +353 1 847 4220 F: +353 1 847 4257

ARUP

INDAVER

  
awnconsulting

Annual Mean  $\text{NO}_x$  Concentrations ( $\mu\text{g}/\text{m}^3$ ) (Year 2010)

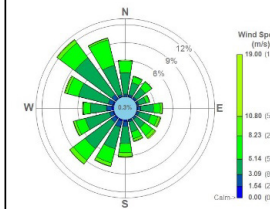
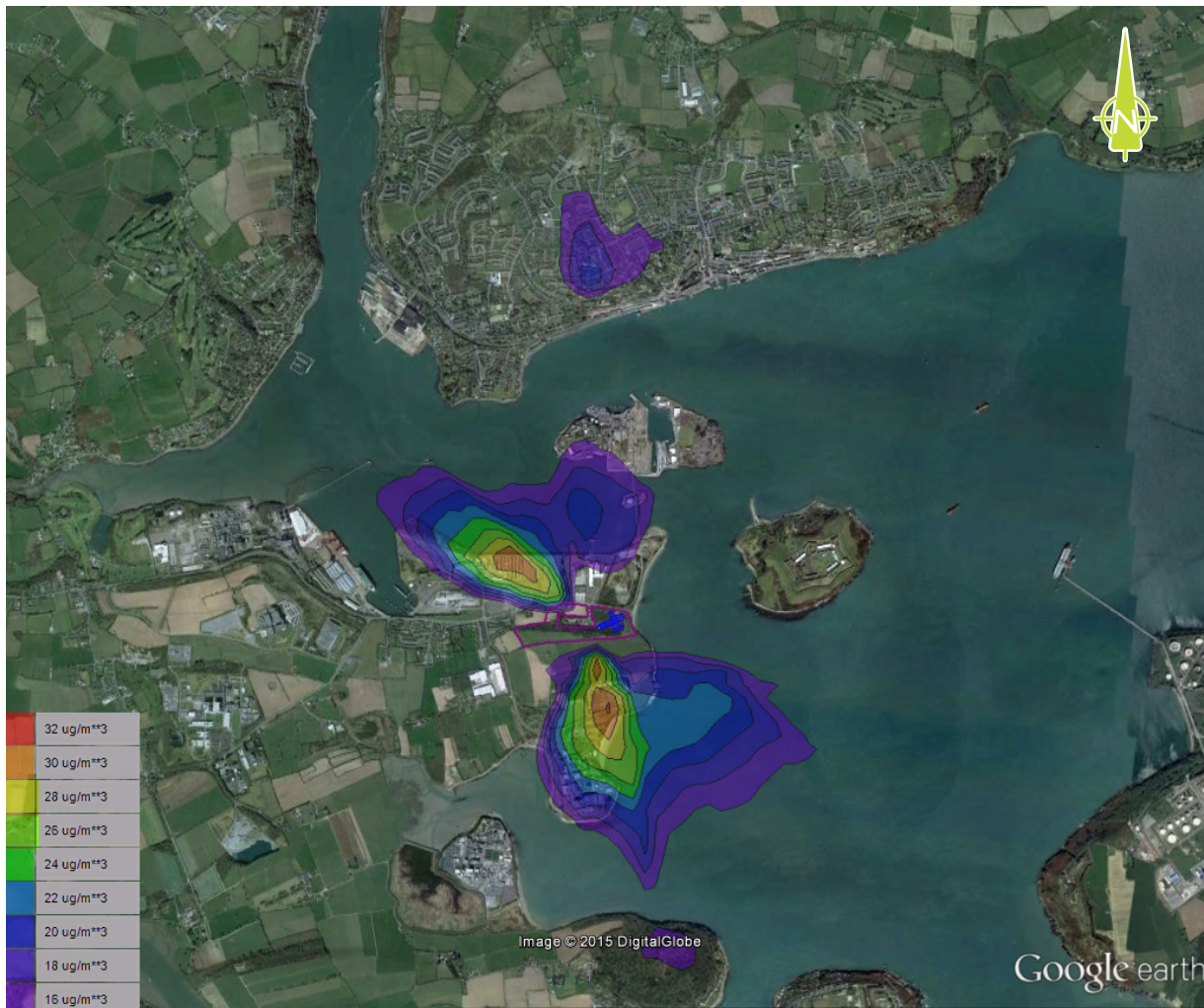
Ringaskiddy Resource Recovery Centre

238129-00

January 2016

Figure 8.13





Background Mapping from Google Earth

99.7<sup>th</sup>ile of 1-Hour Mean SO<sub>2</sub> Concentrations (excluding background)  
Maximum Concentration = 35.7 µg/m<sup>3</sup>

□ Boundary Of Facility

Scale

1:40,000



**Project**  
Ringaskiddy Resource Recovery Centre Assessment

**Reference**

14/7880AR01

**Figure 8.14**

99.7<sup>th</sup>ile of 1-Hour SO<sub>2</sub> Concentrations (µg/m<sup>3</sup>) (Year 2010)

This graphic is for diagrammatic purposes only. No measurement to be taken.

awnconsulting

The Tecpro Building, Clonsaugh Business and Technology Park, Dublin 17  
T: +353 1 847 4220 F: +353 1 847 4257

ARUP

INDAVER

awnconsulting

99.7<sup>th</sup>ile of 1-Hour SO<sub>2</sub> Concentrations (µg/m<sup>3</sup>) (Year 2010)

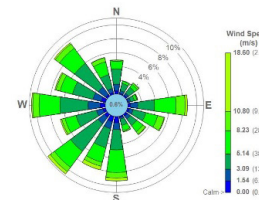
Ringaskiddy Resource Recovery Centre

238129-00

January 2016


Figure 8.14





Background Mapping from  
Google Earth

99.2<sup>th</sup>ile of 24-Hour  
Mean SO<sub>2</sub> Concentrations  
(excluding background)  
Maximum Concentration  
= 5.2 µg/m<sup>3</sup>

 Boundary Of Facility

Scale

1:30,000



**Project**  
Ringaskiddy Resource  
Recovery Centre  
Assessment

**Reference**

14/7880AR01

**Figure 8.15**

99.2<sup>th</sup>ile of 24-Hour  
SO<sub>2</sub> Concentrations  
(µg/m<sup>3</sup>) (Year 2013)

This graphic is for  
diagrammatic purposes  
only. No measurement  
to be taken.

 awnconsulting

The Tecpro Building, Clonsaugh Business and Technology Park, Dublin 17  
T: +353 1 847 4220 F: +353 1 847 4257

ARUP

INDAVER

 awnconsulting

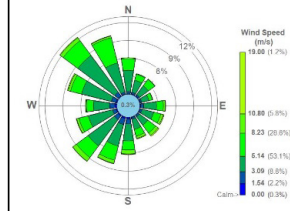
99.2<sup>th</sup>ile of 24-Hour SO<sub>2</sub> Concentrations (µg/m<sup>3</sup>) (Year 2013)

Ringaskiddy Resource Recovery Centre

238129-00

January 2016

Figure 8.15



Background Mapping from  
Google Earth

90<sup>th</sup>ile of 24-Hour Mean  
PM<sub>10</sub> Concentrations  
(excluding background)  
Maximum Concentration  
= 0.30  $\mu\text{g}/\text{m}^3$

□ Boundary Of Facility

Scale  
1:35,000



**Project**  
Ringaskiddy Resource  
Recovery Centre  
Assessment

**Reference**  
14/7880AR01

**Figure 8.16**

90<sup>th</sup>ile of 24-Hour PM<sub>10</sub>  
Concentrations ( $\mu\text{g}/\text{m}^3$ )  
(Year 2010)

This graphic is for  
diagrammatic purposes  
only. No measurement  
to be taken.

awnconsulting

The Tecpro Building, Clonshaugh Business and Technology Park, Dublin 17  
T: +353 1 847 4220 F: +353 1 847 4257

ARUP

INDAVER

awnconsulting

90<sup>th</sup>ile of 24-Hour PM<sub>10</sub> Concentrations ( $\mu\text{g}/\text{m}^3$ ) (Year 2010)

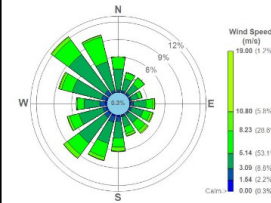
Ringaskiddy Resource Recovery Centre

238129-00

January 2016

Figure 8.16





Background Mapping from  
Google Earth

Annual Mean PM<sub>10</sub>  
Concentrations (excluding  
background)  
Maximum Concentration  
= 0.083 µg/m<sup>3</sup>

Boundary Of Facility

Scale  
1:50,000



**Project**  
Ringaskiddy Resource  
Recovery Centre  
Assessment

**Reference**  
14/7880AR01

**Figure 8.17**  
Annual Mean PM<sub>10</sub>  
Concentrations (µg/m<sup>3</sup>)  
(Year 2010)

This graphic is for  
diagrammatic purposes  
only. No measurement  
to be taken.

ARUP

INDAVER

awnconsulting

Annual Mean PM<sub>10</sub> Concentrations (µg/m<sup>3</sup>) (Year 2010)

Ringaskiddy Resource Recovery Centre

238129-00

January 2016

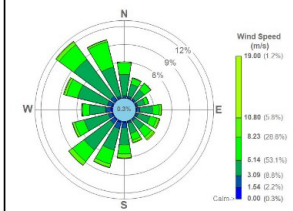
Figure 8.17





awnconsulting

The Tecpro Building, Clonshaugh Business and Technology Park, Dublin 17  
T: +353 1 847 4220 F: +353 1 847 4257



Background Mapping from Google Earth

Annual Mean TOC (as benzene) Concentrations (excluding background)  
Maximum Concentration = 0.083  $\mu\text{g}/\text{m}^3$

Boundary Of Facility

Scale  
1:50,000



Project  
Ringaskiddy Resource Recovery Centre Assessment

Reference  
14/7880AR01

Figure 8.18  
Annual Mean TOC (as benzene) Concentrations ( $\mu\text{g}/\text{m}^3$ ) (Year 2010)

This graphic is for diagrammatic purposes only. No measurement to be taken.

ARUP

INDAVER

awnconsulting

Annual Mean TOC (as benzene) Concentrations ( $\mu\text{g}/\text{m}^3$ ) (Year 2010)

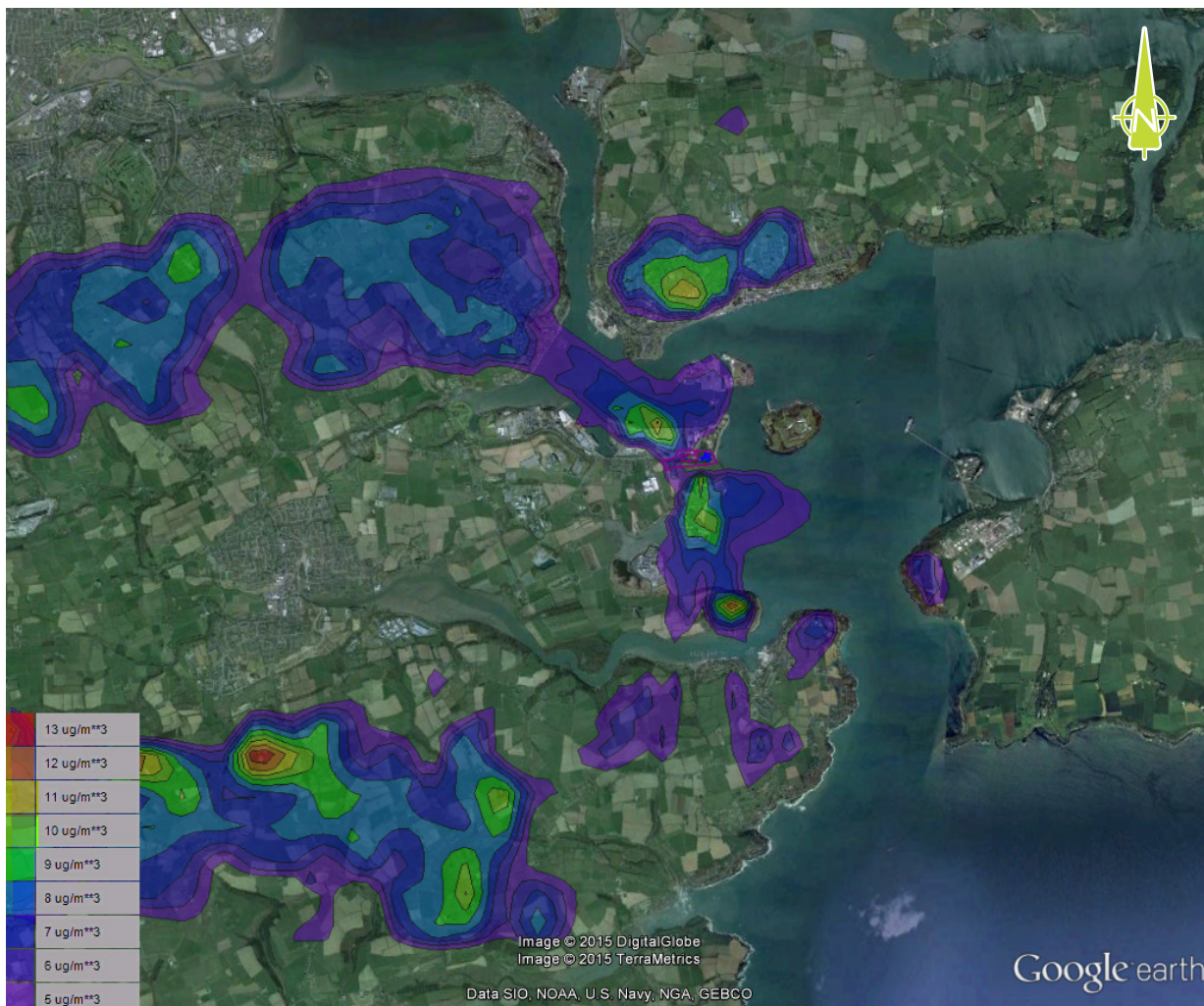
Ringaskiddy Resource Recovery Centre

238129-00

January 2016

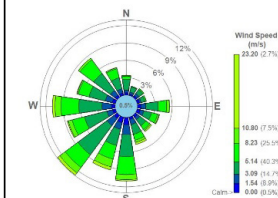
Figure 8.18





**awnconsulting**

The Tecpro Building, Clonsaugh Business and Technology Park, Dublin 17  
T: +353 1 847 4220 F: +353 1 847 4257



Background Mapping from  
Google Earth

Maximum 1-Hour Mean  
HCl Concentrations  
(excluding background)  
Maximum Concentration  
= 15.7  $\mu\text{g}/\text{m}^3$

Boundary Of Facility

Scale  
1:80,000



**Project**  
Ringaskiddy Resource  
Recovery Centre  
Assessment

**Reference**  
14/7880AR01

**Figure 8.19**  
Maximum 1-Hour HCl  
Concentrations ( $\mu\text{g}/\text{m}^3$ )  
(Year 2014)

This graphic is for  
diagrammatic purposes  
only. No measurement  
to be taken.

ARUP

INDAVER

**awnconsulting**

Maximum 1-Hour HCl Concentrations ( $\mu\text{g}/\text{m}^3$ ) (Year 2014)

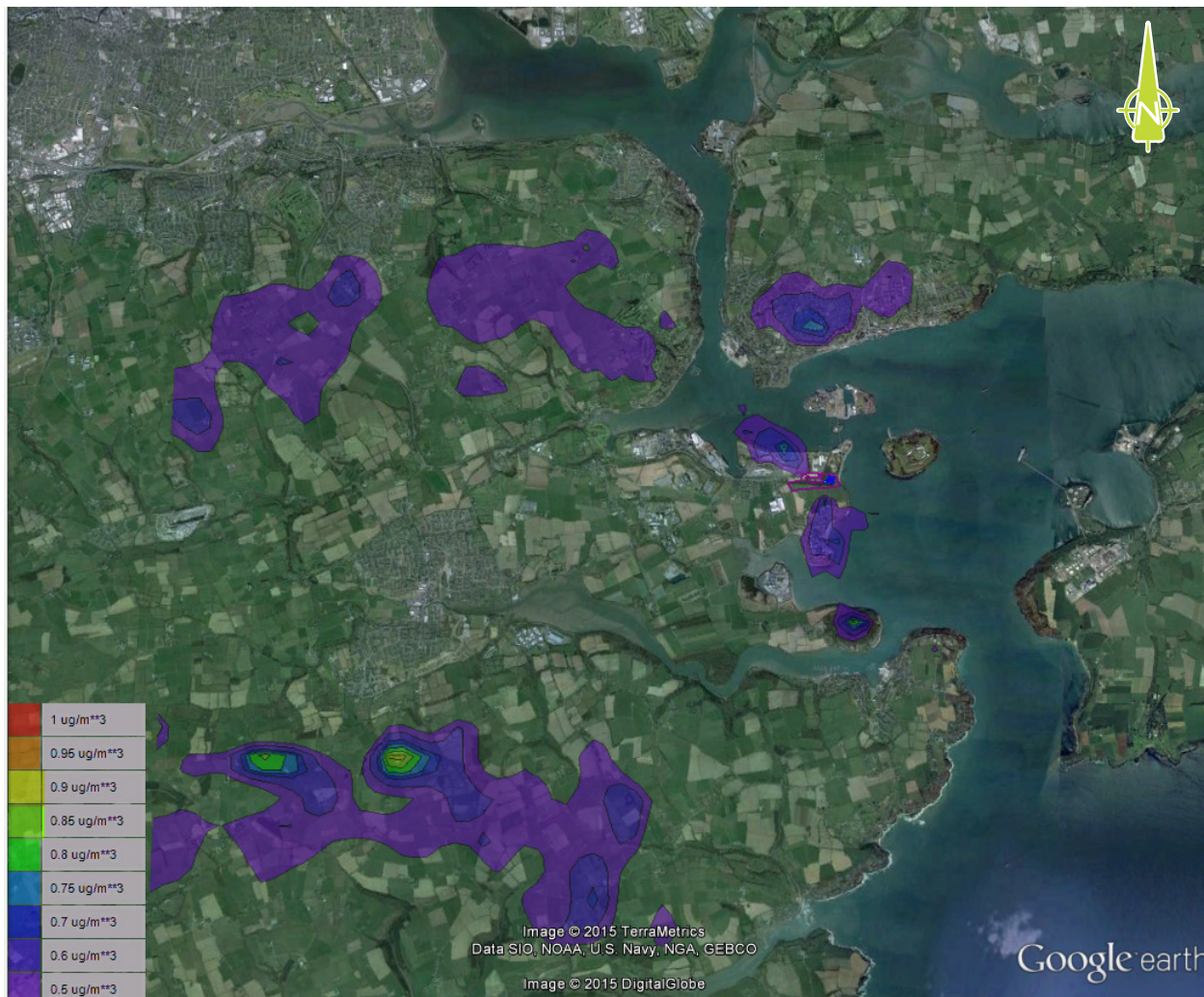
Ringaskiddy Resource Recovery Centre

238129-00

January 2016

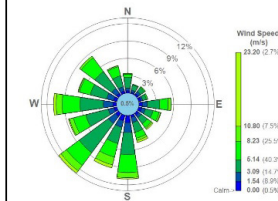
Figure 8.19





**awnconsulting**

The Tecpro Building, Clonsbaugh Business and Technology Park, Dublin 17  
T: +353 1 847 4220 F: +353 1 847 4257



Background Mapping from  
Google Earth

Maximum 1-Hour Mean  
HF Concentrations  
(excluding background)  
Maximum Concentration  
= 1.04  $\mu\text{g}/\text{m}^3$

Boundary Of Facility

Scale  
1:80,000



**Project**  
Ringaskiddy Resource  
Recovery Centre  
Assessment

**Reference**  
14/7880AR01

**Figure 8.20**  
Maximum 1-Hour HF  
Concentrations ( $\mu\text{g}/\text{m}^3$ )  
(Year 2014)

This graphic is for  
diagrammatic purposes  
only. No measurement  
to be taken.

**ARUP**

**INDAVER**

**awnconsulting**

Maximum 1-Hour HF Concentrations ( $\mu\text{g}/\text{m}^3$ ) (Year 2014)

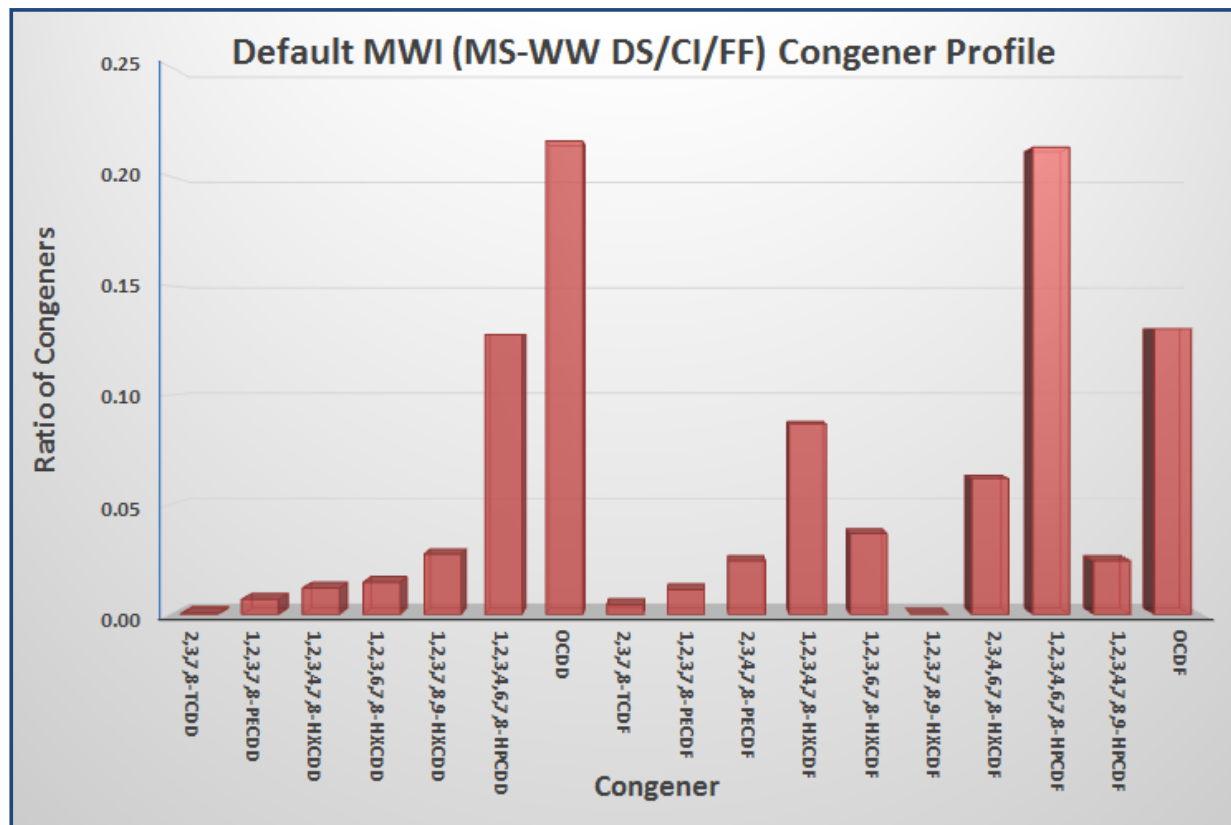
Ringaskiddy Resource Recovery Centre

238129-00

January 2016

Figure 8.20





**Project**  
Ringaskiddy Resource  
Recovery Centre  
Assessment

**Reference**  
14/7880AR01

**Figure 8.21**  
Default Municipal Waste  
Incinerator Congener  
Profile

This graphic is for  
diagrammatic purposes  
only. No measurement  
to be taken.



The Tecpro Building, Clonshaugh Business and Technology Park, Dublin 17  
T: +353 1 847 4220 F: +353 1 847 4257

ARUP



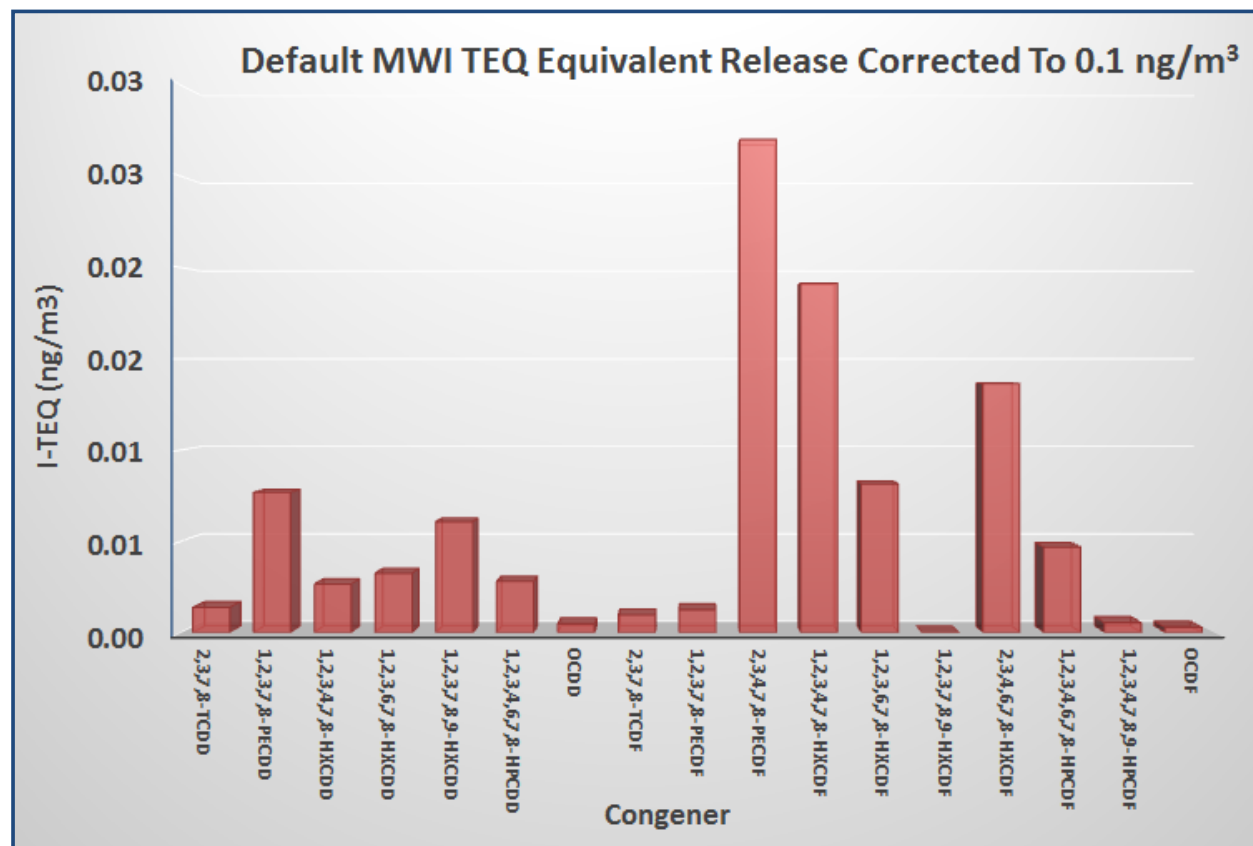
Default Municipal Waste Incinerator Congener Profile

Ringaskiddy Resource Recovery Centre

238129-00

January 2016

Figure 8.21

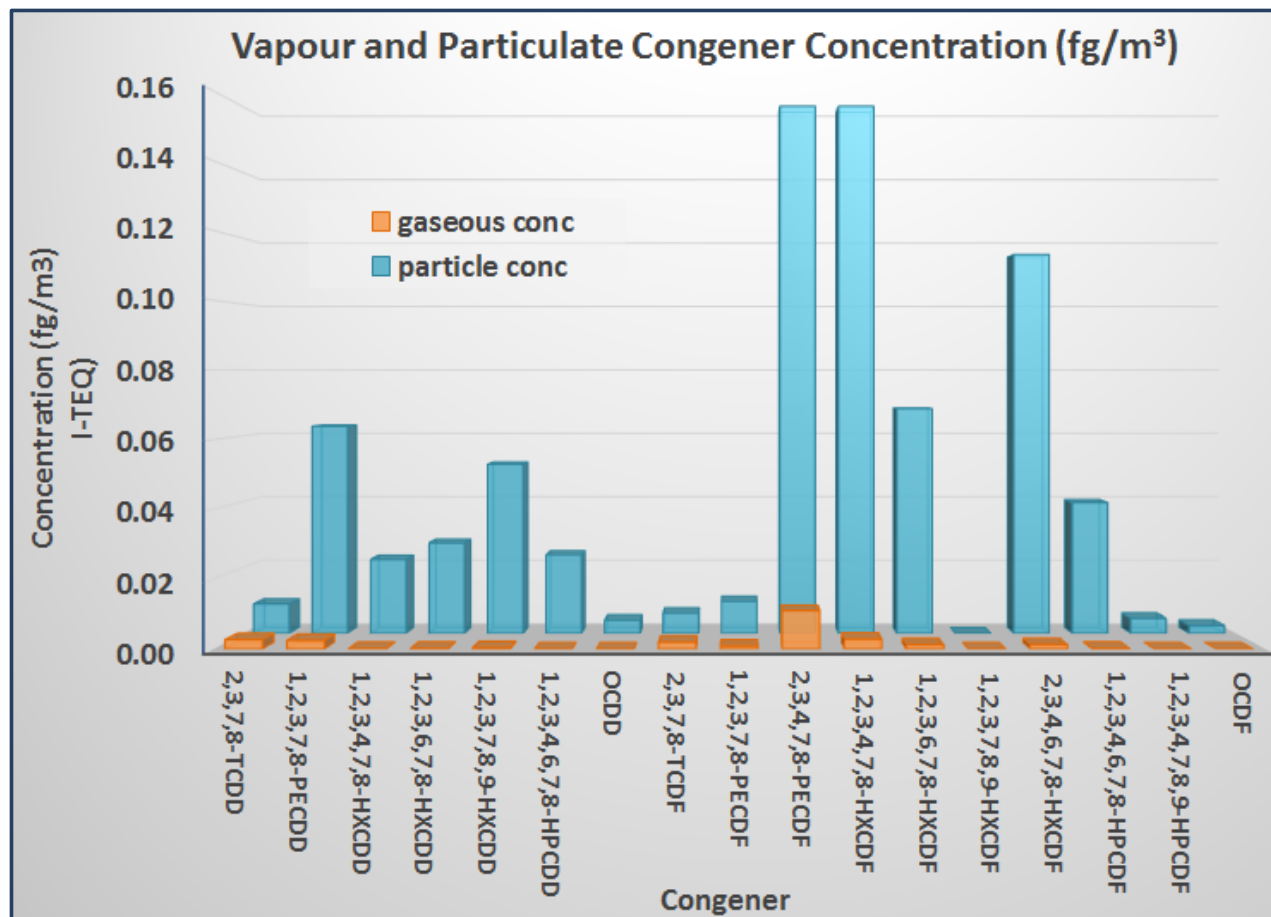


**Project**  
Ringaskiddy Resource  
Recovery Centre  
Assessment

**Reference**  
14/7880AR01

**Figure 8.22**  
Default Municipal Waste  
Incinerator Congener  
Profile Corrected To 0.1  
ng/m<sup>3</sup> TEQ

This graphic is for  
diagrammatic purposes  
only. No measurement  
to be taken.



**Project**  
Ringaskiddy Resource  
Recovery Centre  
Assessment

**Reference**  
14/7880AR01

**Figure 8.23**  
Vapour & Particulate  
Dioxin Congener  
Concentration (fg/m<sup>3</sup>) –  
Maximum Operations

This graphic is for  
diagrammatic purposes  
only. No measurement  
to be taken.

**awnconsulting**

The Tecpro Building, Clonsilla Business and Technology Park, Dublin 17  
T: +353 1 847 4220 F: +353 1 847 4257

**ARUP**

**INDAVER**

**awnconsulting**

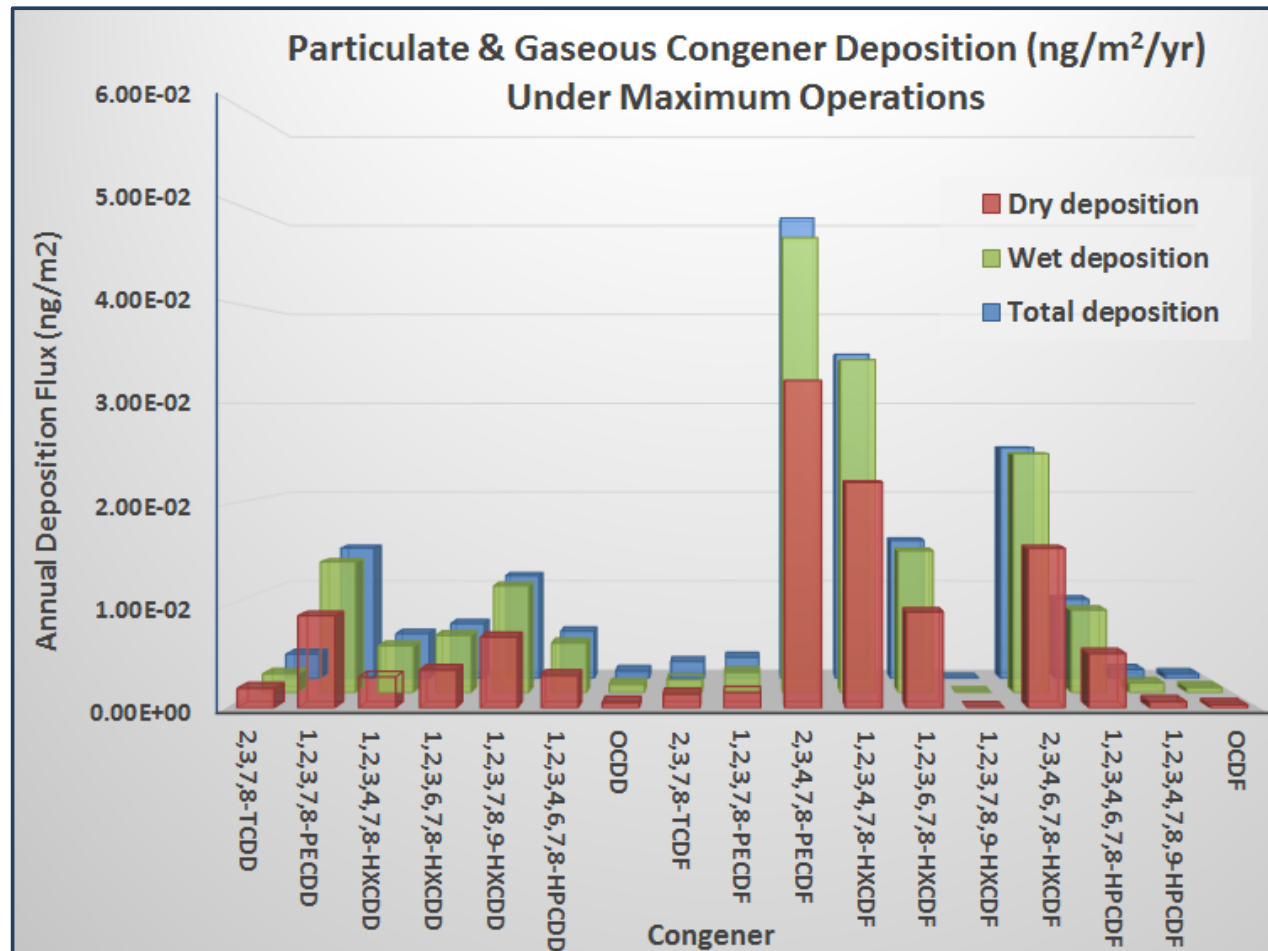
Vapour & Particulate Dioxin Congener Concentration (fg/m<sup>3</sup>) – Max.  
Operations

Ringaskiddy Resource Recovery Centre

238129-00

January 2016

Figure 8.23



**Project**  
Ringaskiddy Resource  
Recovery Centre  
Assessment

**Reference**  
14/7880AR01

**Figure 8.24**  
Vapour & Particulate  
Dioxin Congener  
Deposition Rate  
(ng/m<sup>2</sup>/year) – Maximum  
Operations

**This graphic is for  
diagrammatic purposes  
only. No measurement  
to be taken.**

**awnconsulting**

The Tecpro Building, Clonshaugh Business and Technology Park, Dublin 17  
T: +353 1 847 4220 F: +353 1 847 4257

**ARUP**

**INDAVER**

**awnconsulting**

**Vapour & Particulate Dioxin Congener Deposition Rate (ng/m<sup>2</sup>/year)  
– Max. Operations**

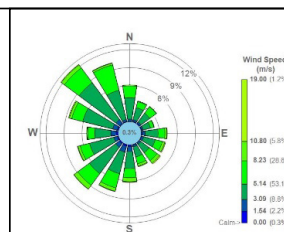
**Ringaskiddy Resource Recovery Centre**

238129-00

January 2016

**Figure 8.24**





Background Mapping from  
Google Earth

Annual Mean Dioxin  
Concentrations (excluding  
background)  
Maximum Concentration  
= 0.85 fg/m<sup>3</sup>

□ Boundary Of Facility

Scale  
1:40,000



**Project**  
Ringaskiddy Resource  
Recovery Centre  
Assessment

**Reference**  
14/7880AR01

**Figure 8.25**  
Annual Mean Dioxin  
Concentrations (fg/m<sup>3</sup>)  
(Year 2010)

This graphic is for  
diagrammatic purposes  
only. No measurement  
to be taken.

**awnconsulting**

The Tecpro Building, Clonshaugh Business and Technology Park, Dublin 17  
T: +353 1 847 4220 F: +353 1 847 4257

**ARUP**

**INDAVER**

**awnconsulting**

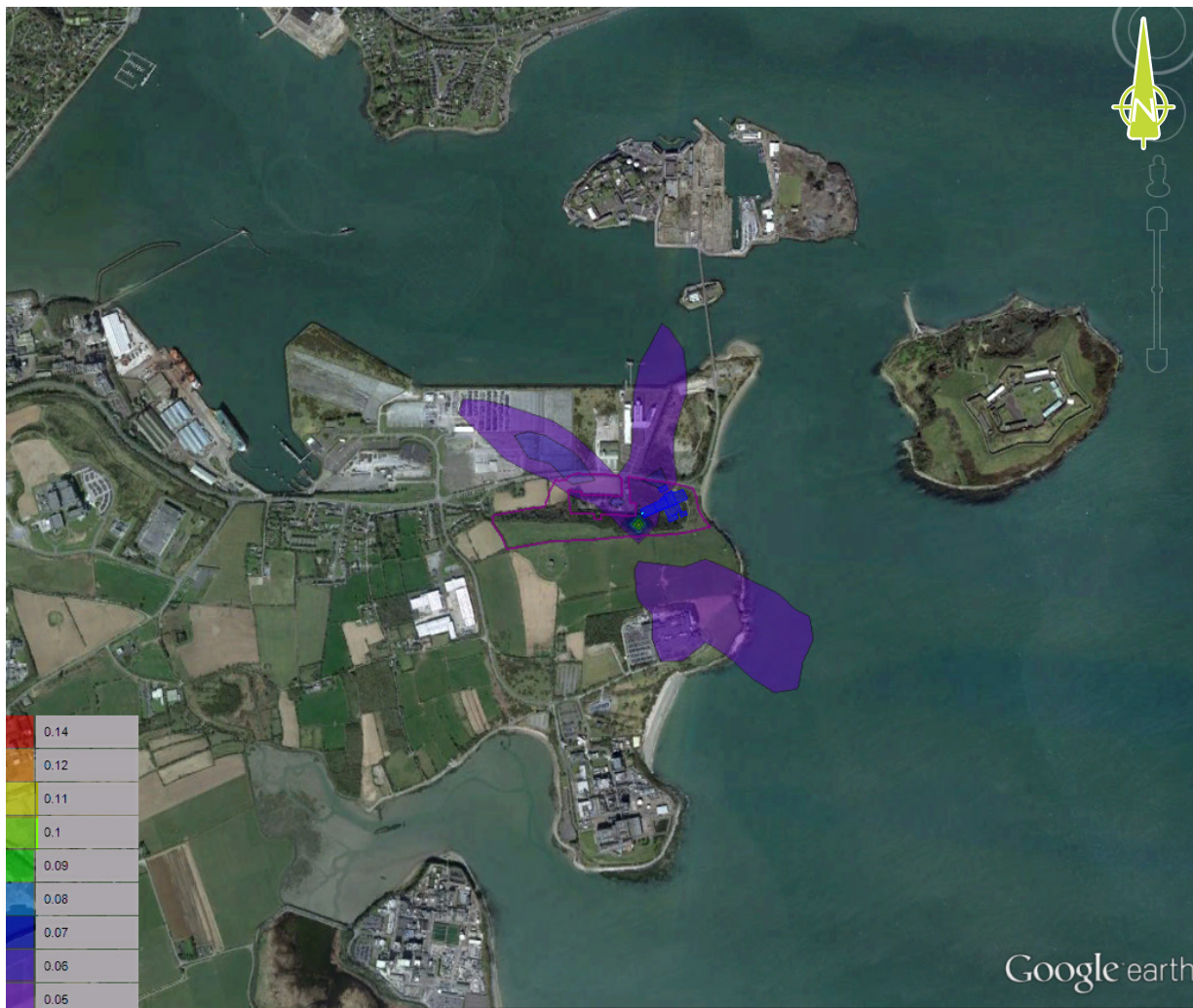
Annual Mean Particulate Dioxin Concentrations (fg/m<sup>3</sup>) (Year 2010)

Ringaskiddy Resource Recovery Centre

238129-00

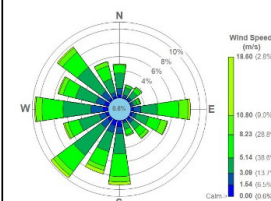
January 2016

Figure 8.25



awnconsulting

The Tecpro Building, Clonshaugh Business and Technology Park, Dublin 17  
T: +353 1 847 4220 F: +353 1 847 4257



Background Mapping from  
Google Earth

Annual Mean Dioxin  
Particulate Deposition  
(excluding background)  
Maximum Concentration  
= 0.18 ng/m²/yr

Boundary Of Facility

Scale  
1:20,000



**Project**  
Ringaskiddy Resource  
Recovery Centre  
Assessment

**Reference**  
14/7880AR01

**Figure 8.26**  
Annual Mean Particulate  
Dioxin Deposition  
(ng/m²/yr) (Year 2013)

This graphic is for  
diagrammatic purposes  
only. No measurement  
to be taken.

ARUP

INDAVER

awnconsulting

Annual Mean Particulate Dioxin Deposition (ng/m²/yr) (Year 2013)

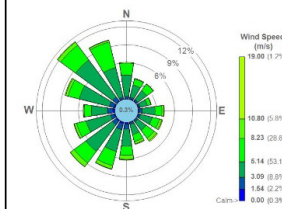
Ringaskiddy Resource Recovery Centre

238129-00

January 2016

Figure 8.26





Background Mapping from Google Earth

Annual Mean Hg Concentrations (excluding background)  
Maximum Concentration = 0.42 ng/m<sup>3</sup>

Boundary Of Facility

Scale  
1:40,000



Project  
Ringaskiddy Resource Recovery Centre Assessment

Reference  
14/7880AR01

Figure 8.27  
Annual Mean Hg Concentrations (ng/m<sup>3</sup>) (Year 2010)

This graphic is for diagrammatic purposes only. No measurement to be taken.

awnconsulting

The Tecpro Building, Clonshaugh Business and Technology Park, Dublin 17  
T: +353 1 847 4220 F: +353 1 847 4257

ARUP

INDAVER

awnconsulting

Annual Mean Hg<sup>2+</sup> (Mercury) Concentrations (ng/m<sup>3</sup>) (Year 2010)

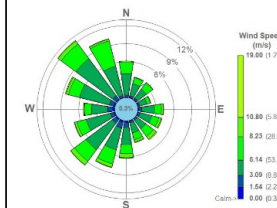
Ringaskiddy Resource Recovery Centre

238129-00

January 2016

Figure 8.27





Background Mapping from Google Earth

Annual Mean Cadmium Concentrations (excluding background)  
Maximum Concentration = 0.42 ng/m<sup>3</sup>

Boundary Of Facility

Scale  
1:40,000



**Project**  
Ringaskiddy Resource Recovery Centre Assessment

**Reference**  
14/7880AR01

**Figure 8.28**  
Annual Mean Cadmium Concentrations (ng/m<sup>3</sup>) (Year 2010)

This graphic is for diagrammatic purposes only. No measurement to be taken.

awnconsulting

The Tecpro Building, Clonsilla Business and Technology Park, Dublin 17  
T: +353 1 847 4220 F: +353 1 847 4257

ARUP

INDAVER

awnconsulting

Annual Mean Cadmium Concentrations (ng/m<sup>3</sup>) (Year 2010)

Ringaskiddy Resource Recovery Centre

238129-00

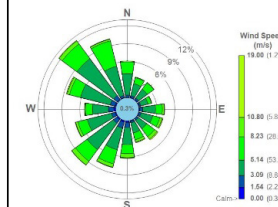
January 2016

Figure 8.28



**awnconsulting**

The Tecpro Building, Clonsaugh Business and Technology Park, Dublin 17  
T: +353 1 847 4220 F: +353 1 847 4257



Background Mapping from  
Google Earth

Annual Mean Nickel  
Concentrations (excluding  
background)  
Maximum Concentration  
= 0.53 ng/m<sup>3</sup>

Boundary Of Facility

Scale

1:30,000



**Project**  
Ringaskiddy Resource  
Recovery Centre  
Assessment

**Reference**

14/7880AR01

**Figure 8.29**

Annual Mean Nickel  
Concentrations (ng/m<sup>3</sup>)  
(Year 2010)

This graphic is for  
diagrammatic purposes  
only. No measurement  
to be taken.

**ARUP**

**INDAVER**

**awnconsulting**

Annual Mean Nickel Concentrations (ng/m<sup>3</sup>) (Year 2010)

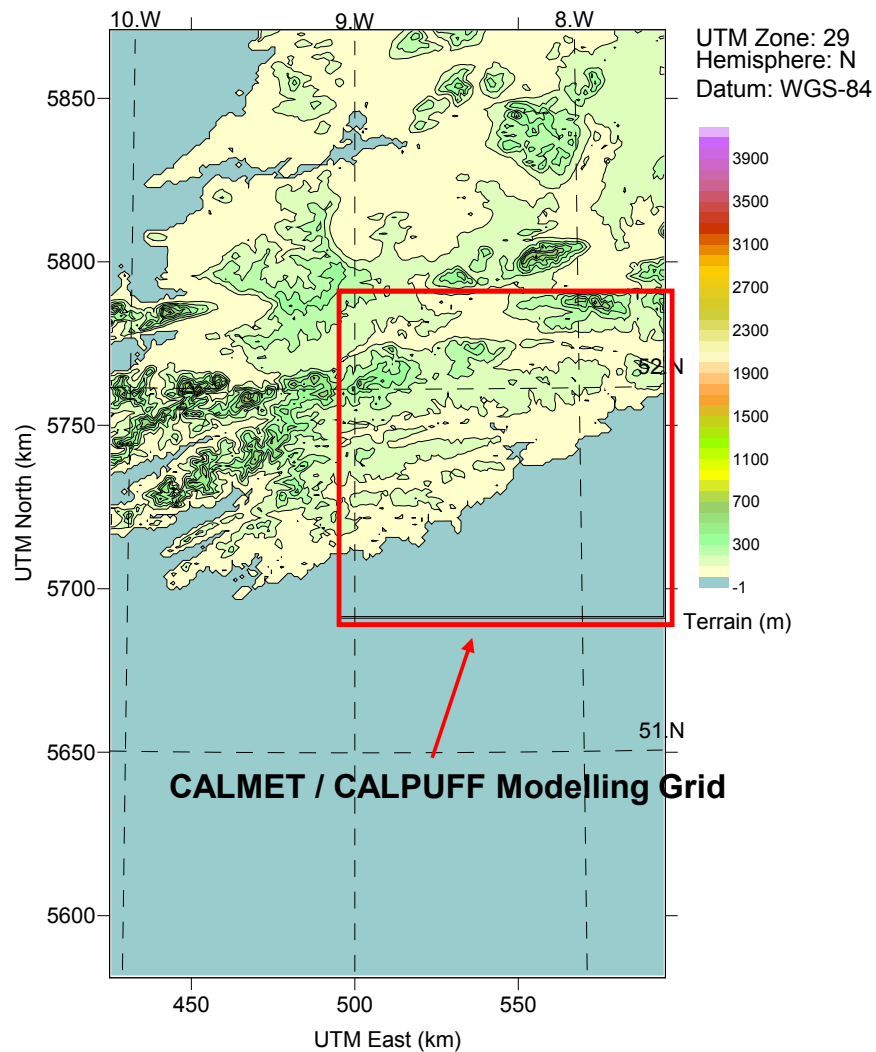
Ringaskiddy Resource Recovery Centre

238129-00

January 2016

Figure 8.29





**Project**  
Ringaskiddy Resource  
Recovery Centre  
Assessment

**Reference**

14/7880AR01

**Figure 8.30**

SRTM Terrain Data In  
Region of Ringaskiddy

This graphic is for  
diagrammatic purposes  
only. No measurement  
to be taken.



The Tecpro Building, Clonshaugh Business and Technology Park, Dublin 17  
T: +353 1 847 4220 F: +353 1 847 4257

ARUP



SRTM Terrain Data In Region of Ringaskiddy

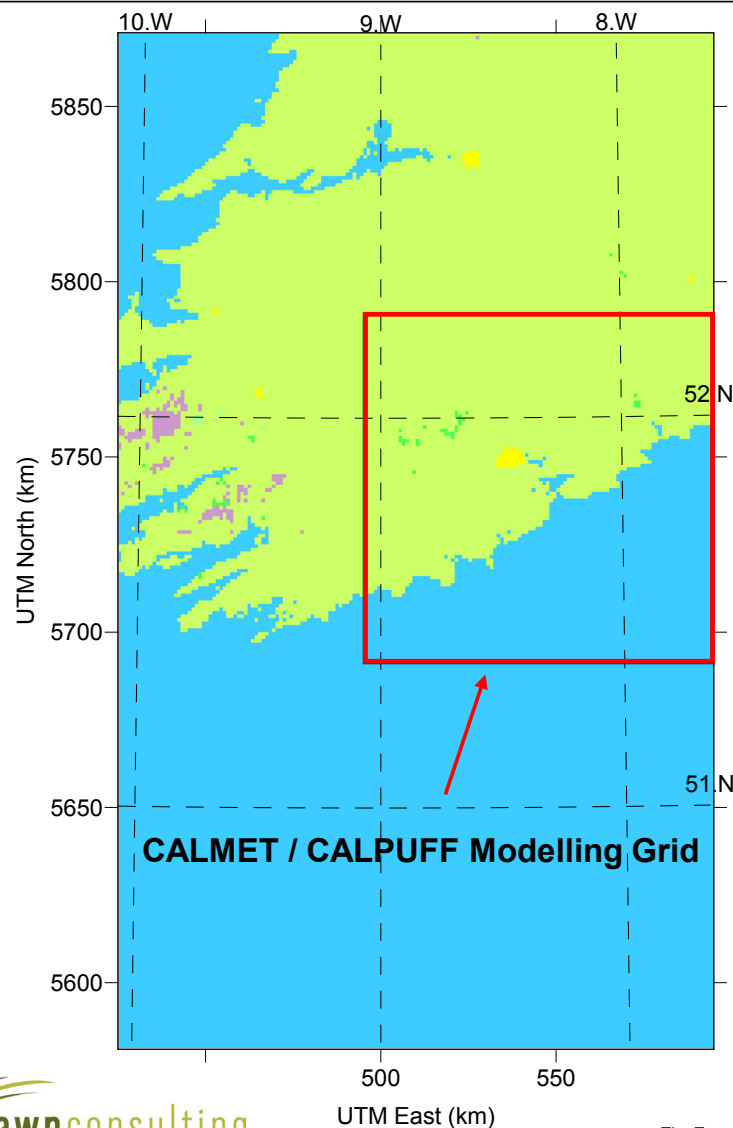
Ringaskiddy Resource Recovery Centre

238129-00

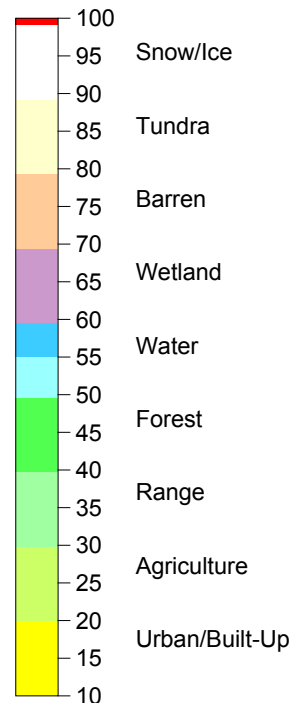
January 2016

Figure 8.30





UTM Zone: 29  
Hemisphere: N  
Datum: WGS-84



### Land Use

**Project**  
Ringaskiddy Resource  
Recovery Centre  
Assessment

**Reference**  
14/7880AR01

### Figure 8.31

1Km GLCC Land-Use  
Data In Region of  
Ringaskiddy Used In  
CALPUFF Model

This graphic is for  
diagrammatic purposes  
only. No measurement  
to be taken.



The Tecpro Building, Clonsaugh Business and Technology Park, Dublin 17  
T: +353 1 847 4220 F: +353 1 847 4257

ARUP



1km GLCC Land-Use Data In Region of Ringaskiddy  
Used In CALPUFF Model

Ringaskiddy Resource Recovery Centre

238129-00

January 2016

Figure 8.31